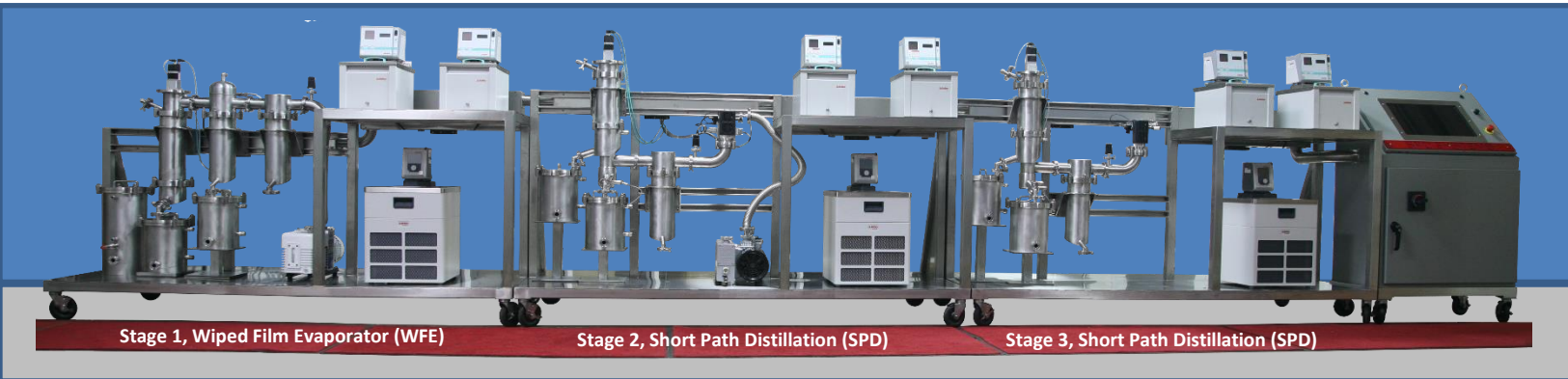




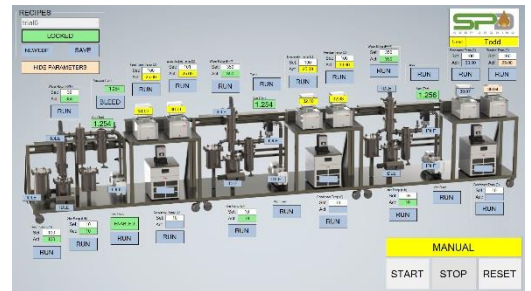
SPD-4.5 SPD-8
 SPD-16 SPD-25



SPD Systems is a multi-disciplinary equipment manufacturer, committed to continuous improvement, scalability, and the highest quality. **SPD** distillation systems are designed, manufactured, and assembled in the United States. **SPD** was created to fill a gap in the high-volume distillation market, and set out to create state-of-the-art, high volume, fully automated, user friendly systems. **SPD's** systems are low maintenance and built to last. Let **SPD** be your first and last stop for optimized distillation solutions.

• **WHY SPD SYSTEMS?**

- **Vertical Integration**
 - Control of Cost, Quality, and Lead Times
- **Highly Experienced Team**
 - In-House Automation, Engineering, Manufacturing, and Distillation Professionals
- **Customer Focused**
 - In-House Customer Service, Technical Support, Repair and Maintenance
 - Standard or Custom System Configurations
 - Continuous Improvement to Meet Changing Market Demands
- **High Quality Components**
 - Allen Bradley® Industrial PLC's
 - Leybold® Turbo Molecular Deep Vacuum Pumps
 - Julabo® & Mokon® Heating and Refrigeration Circulators
- **Modular and Scalable**
 - Flexible Floorplans
 - Single and Two-Stage Systems Can Be Expanded to Full Three-Stage Systems as Your Requirements Grow.



Graphic User Interface with 21" Color Touchscreen

California - Colorado - Illinois - New York

Steve Lach:
 Mobile: (720) 402-4451 • Office: (323) 262-0773
SL@SPDistillation.com
 Todd Honeyville
 (224) 733-7732 / TH@SPDistillation.com

Joe Weiner:
 (224) 733-7736 / JW@SPDistillation.com
 Bob Wiener:
 (707) 601-7219 / RW@SPDistillation.com

System Specifications*

	SPD-4.5	SPD-8	SPD-16	SPD-25
Throughput (Liters per Hour)**	4.5	8	16	25
Number of Stages	1-3	1-3	1-3	1-3
Continuous Flow	Yes	Yes	Yes	Yes
Standard Feed Tank Capacity (Liters)	10	10	200	200
Automatic In-Feed	Available	Available	Available	Available
Construction				
Product Contact Components	316 SS	316 SS	316 SS	316 SS
Frame	304 SS	304 SS	304 SS	304 SS
Controller & HMI				
Allen-Bradley® Industrial PLC	√	√	√	√
Windows® Based Operating System	√	√	√	√
21" Color Touchscreen	√	√	√	√
1-Click Recipe Based Setup	√	√	√	√
Data Collection Capability	√	√	√	√
Remote Access, Monitoring, and Diagnostics	√	√	√	√
Control Cabinet	Steel	Steel	304 SS	304 SS
Power Requirements				
Voltage	240/480vac 3p/60hz	240/480vac 3p/60hz	480vac 3p/60hz	480vac 3p/60hz
Amperage (1/2/3 stage) @240vac @480vac	75a/135a/200a 40a/75a/100a	75a/135a/200a 40a/75a/100a	N/A	N/A 100a/200a/300a
Standard Footprints***				
1-Stage	4'x10'	4'x14'	12'x14'	12'x14'
2-Stage	4'x16'	4'x22'	12'x22'	12'x22'
3-Stage	4'x22'	4'x30'	12'x30'	12'x30'
Scalable****	Yes	Yes	Yes	Yes



SPD-8 Wiped Film Evaporator



SPD-8 Condenser

* System Specifications are current as of time of publication and subject to change. SPD Systems' continuous improvement program strives to incorporate the latest technology, innovations, and improvements.

** Throughput rating is based on testing a controlled mixture of product with a consistent ethanol content. Actual performance may vary based on factors including, but not limited to: consistency of product, viscosity, ethanol/solvent content, ambient temperature, humidity, altitude, etc..

*** Standard footprint is for systems set up in a straight line configuration. Other layouts are available. Does not include aisles for access around machine.

**** If customer purchases a 1-stage or 2-stage unit, additional stages can be added as requirements increase.

California - Colorado - Illinois - New York

Steve Lach:
Mobile: (720) 402-4451 Office: (323) 262-0773
SL@SPDistillation.com

Todd Honeyville:
(224) 733-7732 / TH@SPDistillation.com

Joe Weiner:
(224) 733-7736 / JW@SPDistillation.com

Bob Wiener:
(707) 601-7219 / RW@SPDistillation.com

